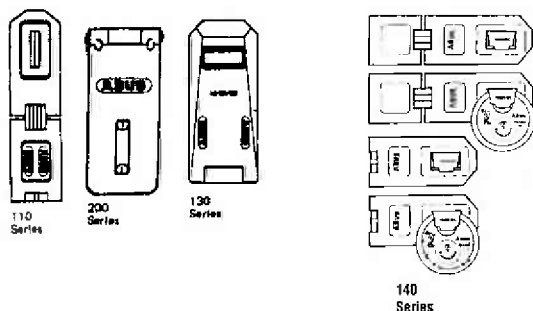


# ABUS

AskYourLocksmith.com  
Lancaster, Pennsylvania  
Phone 717-392-6333

## THE MOST SECURE - THE MOST VERSATILE THE STRONGEST HASPS IN THE WORLD



### 110 Series High Security 'Caterpillar'

#### Construction Hasps

Code	Total Length	Width	No. of Links	Carriage Bolt and Screws	Pack	Price Ea.
AB110/155C	6 1/4"	1 3/4"	1	Yes	3/Box	9.55
AB110/195C	7 3/4"	1 3/4"	2	Yes	3/Box	11.80
AB110/230C-FC	9"	1 3/4"	3	Yes	6/Box	14.60

### 200 Series Regular Safety Hasps

One-piece Laminated Case Hardened Staples.

Code	Total Length	Width	Screws	Pack	Price Ea.
AB200/75C	3"	1 3/16"	Yes	6/Box	3.40
AB200/95C	3 3/4"	1 9/16"	Yes	6/Box	4.35
AB200/115C	4 1/2"	1 7/8"	Yes	6/Box	5.30
AB200/135C	5 1/2"	1 7/8"	Yes	3/Box	6.60
AB200/155C	6 1/2"	1 7/8"	Yes	3/Box	7.90

### 130 Series Heavy Duty Granit Hasp

Solid Malleable Iron Construction. Inaccessible Auto-Riveted Hinge Pins and Hardened Staple.

Code	Total Length	Width	No. of Links	Screws	Pack	Price Ea.
AB130/130BLTS	7 1/4"	3"	1	Yes	3/Box	79.50

### 140 Series W/Shackle Guard -For Diskus

Code	Total Length	Width	No. of Links	Screws	Pack	Price Ea.
AB140/120C	4 3/4"		1	Yes	3/Box	17.30
AB140/190EC	7 1/2"		1	Yes	3/Box	22.50

B - Bulk Pack - No screws or carriage bolts included  
C - Carded - Screws and carriage bolts included  
BX - Box Pack - Screws and carriage bolts included.

Available Keyed Alike(KA) or Keyed Different(KD) Specify when ordering

## BREAKAWAY PADLOCK

- Economy padlock with rivet-free steel case
- Automatic locking
- Nickel-plated steel shackle

Shackle diam: 5/32"  
Vertical Clearance: 11/16"  
Horizontal Clearance: 3/4"

AB16/35  
**310**

1 3/8"  
width



## GRANITE PADLOCKS TRULY A ROCK OF A LOCK

For crucial maximum security requirements, the ABUS Granite padlocks have proven to be the strongest padlocks we have ever built. They surpass Swedish testing requirements for pull strength, saw resistance etc., work smoothly at -40 F, and feature Thru-Hardened Shackle and Body - an ABUS exclusive!

### 36/55 Rekeyable Granite Padlock

#### Features:

- ABUS Exclusive Special Steel Alloy Body and Shackle
- Tested to withstand 4 1/4 ton pull test.
- Operates smoothly at -40°F
- High Precision Cylinder with five Bronze Mushroom Pins
- Bronze Springs
- Provides unlimited key changes
- Double Steel Ball Locking



Code	Lock Size	Shackle Dia.	Clearance Vert.	Horiz.	Pack	1" Shackle	2" Shackle
AB36/55RKKD	2 1/8"	7 1/6"	1"	1 1/8"	3/Box	94.55	
AB36/HB55RKKD	2 1/8"	7 1/6"	2"	1 1/8"	3/Box		101.25

### HIGH SECURITY PLUS CYLINDER KEYWAY - DISC TUMBLER

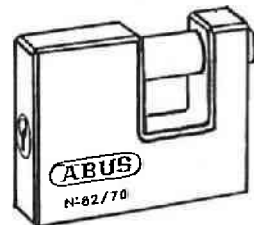
Code	Lock Size	Shackle Dia.	Clearance Vert.	Horiz.	Pack	1" Shackle	2" Shackle
AB37/55RKD	2 1/8"	7 1/6"	1"	1 1/8"	3/Box	99.95	
AB37/HB55RKD	2 1/8"	7 1/6"	2"	1 1/8"	3/Box		105.60

Available Keyed Different(KD), Keyed Alike(KA), Master Keyed(MK) available at extra cost.  
Specify when ordering

Parts kit for 36/37 series: AB36-SK-1 100.00

## BRASS MONOBLOCK PADLOCKS w/SPRING-FIRED SHACKLE

- Unique padlock design provides maximum resistance to bolt cutters
- Solid brass construction resists corrosion and pitting
- 5 pin paracentric keyway offers high resistance to picking
- Cylinder activation spring fires the shackle open for easy removal of padlock
- Non-key-retaining - Allows for easy closing



KD, KA extra charge

Code	Lock Size	Shackle Dia.	Clearance Vert.	Horiz.	Pack	Price Ea.
AB82/63	2 1/2"	3/8"	9/16"	3/4"	6/Box	16.90
AB82/70	2 3/4"	7/16"	1/2"	7/8"	6/Box	18.65
AB82/90	3 5/8"	7/16"	11/16"	1 7/16"	6/Box	28.25

## PREMIERE ALL-STAINLESS STEEL PADLOCKS

- Stainless steel body for maximum corrosion protection
- Stainless steel shackle resists corrosion while giving maximum protection
- Double stainless steel ball dead locking mechanism
- Available in 5-pin paracentric keyway
- Key retaining only

Shackle diam: 3/8"  
Vertical Clearance: 13/16"  
Horizontal Clearance: 3/4"

AB90/50

**5200**



2"

- REKEYABLE PADLOCK
- SECURITY BRASS PADLOCKS
- DISKUS PADLOCK

**BRASS CONVERTIBLE REKEYABLE PIN TUMBLER PADLOCKS 83/45**

In seconds the 83/45 converts to either a key-retaining or non-key retaining padlock. (All it takes is a Phillips head screwdriver.) This means that in just one lock you have the instant capability to meet your customers' needs for either retaining or non-key retaining security. The Z-Bar makes the difference.



Code	Lock Size	Shackle Dia.	Clearance Vert.	Clearance Horiz.	Pack	Price
AB83/45	1 3/4"	5/16"	7/8"	7/8"	6/Box	<b>28<sup>45</sup> ea.</b>

**Keys into today's most popular locking systems**

- AB83/45-100 Interchanges with Yale No. 8
- AB83/45-200 Interchanges with Kwikset
- AB83/45-300 Interchanges with Schlage C, 6 pin-5 pins loaded
- AB83/45-306 Interchanges with Schlage C, 6 pin-6 pins loaded **NEW**
- AB83/45-323 Interchanges with Schlage C123 Everest **NEW**
- AB83/45-345 Interchanges with Schlage C145 Everest **NEW**
- AB83/45-400 Interchanges with Corbin 60/59A1-A2, B1-B2
- AB83/45-700 Interchanges with Sargent LA-LB-LC
- AB83/45-800 Interchanges with Weiser-Falcon
- AB83/45-900 Interchanges with Arrow
- AB83/45-1000 Interchanges with Russwin D1-D4
- AB83/45-3000 Interchanges with Schlage C thru L
- AB83/45-6000 Interchanges with Master **NEW**

**AB83SK-2 109.75**  
Parts kit for 83 series

Available Keyed Different (KD), Keyed Alike (KA), or O-Bitted Boxed (OB). Specify when ordering

Code	Lock Size	Shackle Dia.	Clearance Vert.	Clearance Horiz.	Pack	Price
SCHLAGE C						<b>33<sup>10</sup> ea.</b>
AB83/50-300	2"	3/8"	1 1/16"	15/16"	6/Box	

**ABUS DISKUS PADLOCKS**

The ABUS Diskus padlocks...World famous for Maximum Security Applications. This ABUS exclusive is constructed of stainless steel for extreme weather situations, is laser welded for solid strength, and when in use in locked position, allows virtually no room for bolt cutters, saws, etc.



Use on vending machines, car wash equipment, bicycles, motorcycles, storefront gates, and wherever maximum security is required.

**AB24/60 Diskus w/Stainless Shackle**

- 4 Pin Tumbler with Anti-Pick Mushroom Pins and Bronze Springs

Code	Lock Size	Pack	Price
AB24/60	2 3/8"	6/Box	25.65 ea.

**24/70 The Invincible Diskus**

- 5 Pin Tumbler with Anti-Pick Mushroom Pins and Bronze Springs

Code	Lock Size	Shackle Opening	Shackle Dia.	Pack	Price
AB24/70	2 3/4"	3/4 wide 3/4 Deep	13/32"	6/Box	<b>27<sup>15</sup> ea.</b>

**24/ST/90 The Biggest Diskus**

- New Diskus made of Stainless Steel with nearly 10,000 lbs breaking strength
- Five Pin Tumbler Brass Cylinder with Anti-Pick Mushroom Pins and Bronze Springs

Code	Lock Size	Shackle Opening	Shackle Dia.	Pack	Price
AB24/90	3 5/8"	1" wide 5/8 Deep	1/2"	6/Box	<b>44<sup>69</sup> ea.</b>

Available Keyed Different (KD), Keyed Alike (KA), Master Keyed (MK) available at extra charge. Specify when ordering

**COMPETITIVELY PRICED HIGH SECURITY BRASS PADLOCKS**

**55 Series Solid Brass Padlocks**

Features-

- 4 Pin Tumbler Security
- Extruded Solid Brass Body
- Chrome Plated Hardened Steel Shackle



Code	Lock Size	Shackle Dia.	Clearance Vert.	Clearance Horiz.	Pack	Price Ea.
AB55/25	1"	5/32"	13/32"	13/32"	12/Box	4.80
AB55/30	1 1/4"	5/32"	19/32"	9/16"	12/Box	5.60
AB55/40	1 1/2"	5/32"	27/32"	13/16"	12/Box	7.20
AB55/HB/40	1 1/2"	5/32"	2 1/2" Shackle		6/Box	8.35
AB55/45	1 3/4"	5/32"	1/4"	15/16"	6/Box	8.60
AB55/50	2"	5/32"	9/32"	1"	6/Box	11.40
AB55/60	2 3/8"	5/32"	15/16"	1 1/4"	6/Box	13.20

Available Keyed Alike (KA) or Keyed Different (KD). Specify when ordering.

**QUALITY MARINE BRASS**

Designed to withstand the elements, this series of Solid Brass ABUS padlocks is specifically designed for hard long use around the water.

**55 MB Series Marine Brass Padlocks**

Features-

- Solid Brass Body & Shackle
- Brass Pin Tumbler Cylinder with Bronze Springs
- Corrosion Resistant

Code	Lock Size	Shackle Dia.	Clearance Vert.	Clearance Horiz.	Pack	Price Ea.
AB55/30MB	1 1/4"	3/16"	19/32"	9/16"	12/Box	7.40
AB55/40MB	1 1/2"	1/4"	27/32"	13/16"	12/Box	9.05

\*AB55/30MB and AB55/40MB are available three on a card, keyed alike, for convenient dealer sales.

Available Keyed Alike (KA) or Keyed Different (KD). Specify when ordering.

**AB20/70 Diskus w/Plus Cylinder**

- High Security Plus Cylinder for "key control" applications

Code	Lock Size	Pack	Price
AB20/70	2 3/4"	6/Box	45.00 ea.
AB20/80	3 1/4"	3/Box	63.20 ea.

**AB28/70 Buffo Diskus - Economical Price Point Version of Diskus**

Code	Lock Size	Pack	Price
AB28/70	2 3/4"	6/Box	19.00 ea.

**AB24/70RK - Rekeyable Diskus w/Stainless Shackle**

- 5 Pin Tumbler with Anti-Pick Mushroom Pins and Bronze Springs

Code	Lock Size	Pack	Price
AB24/70RK-KA	2 3/4"	6/Box	35.95 ea.

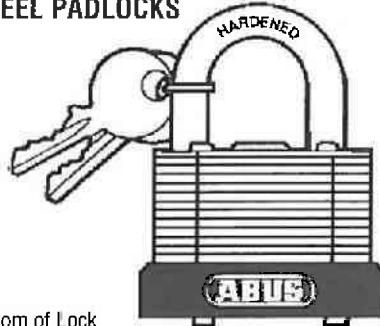
# ABUS

AskYourLocksmith.com  
Lancaster, Pennsylvania  
Phone 717-392-6333

- ALL WEATHER SECURITY PADLOCKS
- RESETTABLE PADLOCKS

## 41 SERIES LAMINATED STEEL PADLOCKS

One of the finest selections of high security locks ever developed. Available in a full range of sizes and shackle lengths, the 41 Series has been the solution to security problems for industrial and commercial installations for many years, with a long track record of reliability and versatility.



- Special Key Guard Drill Protection
- Key Number Not Imprinted on Bottom of Lock
- Paracentric Keyway
- 4 or 5 Pin Tumbler Cylinder with Pick-Resistant Mushroom Shaped Pins
- Heel and Toe Bolted Shackle
- Extra Rust Protection by Individual Dipping of Steel Plates
- All Padlocks Feature Protective Bumpers
- One Key Blank (#24/41 fits all sizes)
- Available Master Keyed

Abus #	Size	Shackle Diameter	Verticle Clearance	Horizontal Clearance	Price
AB41/30	1 1/4"	13/64"	11/16"	5/8"	9.00
AB41/40	1 1/2"	17/64"	13/16"	3/4"	10.20
AB41/45	1 3/4"	5/16"	7/8"	7/8"	11.90
AB41/50	2"	3/8"	1"	15/16"	15.15
AB41/HB/30	1 1/4"	3/16"	2"	5/8"	10.25
AB41/HB/40	1 1/2"	1/4"	2"	3/4"	12.05
AB41/HB/45	1 3/4"	5/16"	2"	7/8"	13.50
AB41/HB/50	2"	5/16"	2"	5/16"	16.75
AB41/HB/50-125	2"	5/16"	5"	15/16"	19.30

Available Keyed Alike (KA) and Master Keyed (MK) at additional cost.

## MAXIMUM SECURITY CONVERTIBLE INTERCHANGEABLE CORE PADLOCK (CORES NOT INCLUDED)

Accepts Arrow® Best® Falcon® KSP® Medeco® Peaks® or Eagle® 5, 6, or 7 pin cores (**not included**).

In just seconds you can convert the 831C/45 padlock from key-retaining to non-key-retaining. Just insert the "Z-Bar" on the end of the lock core's driving fork.

Emergency Security Lock Out™ - lets you instantly restore security on the job site. Just remove the core's driving fork from the lock cylinder. Users' keys will no longer open the lock, but you can still use the master core-change key to replace the core.



831C/45-1

1 3/4" Brass Body, Triple Chrome Plated Hardened Boron Steel Alloy Shackle

Code	Package	Shackle		Price
		Diameter	Clearance	
AB831C/45-1	Box	5/16"	1"	23.35
AB831C/45-2	Bulk	5/16"	2"	24.70
AB831C/45-4	Bulk	5/16"	4"	27.30
AB831C/45-6	Bulk	5/16"	6"	27.30

## 160 SERIES THE RESETTABLES

Features heavy chrome plating for weather resistance, and a double bolted hardened steel shackle. No tools required to change combination.

Std. Pkg: 6



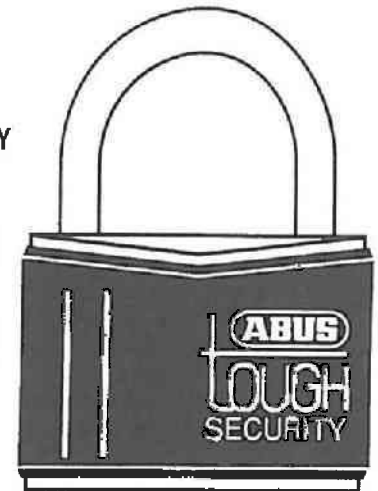
Code	Lock Size	Shackle Dia.	Clearance		Combinations/ Dials	Price Ea.
			Vert.	Horiz.		
AB160/40C	1 1/2"	7/32"	3/4"	7/8"	1,000/3	21.60
AB160/50C	2"	5/16"	1"	1 1/8"	10,000/4	23.75

## 84 SERIES

### BLUE/GOLD ALL-WEATHER SECURITY BRASS PADLOCKS

Quality brass padlocks with an attractive, protective black vinyl sheath over the lock body. Ideal for use on boats, utility boxes, ski equipment; all indoor and outdoor domestic and industrial security applications.

Packaging: C - 6/box; KD, KA - 12/box.



#### Features-

- Double locking shackle (except ABT84MB/20-25)
- Solid brass body and shackle
- Rust-free stainless steel cylinder springs
- Lifetime warranty

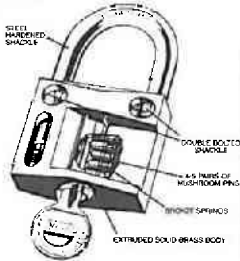
Code	Shackle Size	Vertical Diameter	Horizontal Clearance	Clearance	Price
ABT84MB/25	1"	5/32"	13/32"	15/32"	6.35
ABT84MB/30	1 1/4"	3/16"	19/32"	9/16"	8.45
ABT84MB/40	1 1/2"	1/4"	13/16"	27/32"	10.35
ABT84MB/50	2"	9/32"	11/16"	1"	16.15



### PREMIUM BRASS PADLOCKS - 85 SERIES

Top security in a brass padlock. Manufactured to precise specifications, this series of padlocks provides unsurpassed quality and durability.

- Extruded solid brass body
- Heel and toe bolted for added strength
- 5 pin tumbler security (40 & 50 series)
- Chrome plated case hardened steel shackle
- Anti-pick mushroom pins

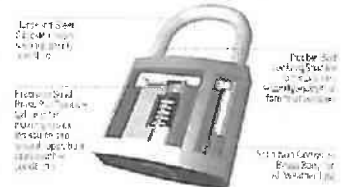


Abus #	Size	Shackle Diameter	Verticle Clearance	Horizontal Clearance	Price
AB85/30	1 1/4"	3/16"	1 1/16"	3/4"	9.75
AB85/30KA	1 1/4"	3/16"	1 1/16"	3/4"	10.70
AB85/40	1 1/2"	1/4"	7/8"	7/8"	13.20
AB85/40KA	1 1/2"	1/4"	7/8"	7/8"	14.15
AB85/50	2"	5/16"	1 1/8"	1 3/16"	18.10
AB85/50KA	2"	5/16"	1 1/8"	1 3/16"	19.05
AB85/HB/40KD	1 1/2"	1/4"	2 1/2"	7/8"	14.35
AB85/HB/40KA	1 1/2"	1/4"	2 1/2"	7/8"	15.30
AB85/HB/50KD	2"	5/16"	3 1/8"	1 3/16"	19.85
AB85/HB/50KA	2"	5/16"	3 1/8"	1 3/16"	20.80

### MAXIMUM SECURITY BRASS PADLOCKS - 65 SERIES

A top of the line pin tumbler brass padlock. An excellent choice for superior weatherability in High and Maximum Security locks.

- Solid non-corrosive brass body for all weather use
- Double bolt locking shackle for maximum security
- Hardened steel shackle resists sawing, prying, and filing



Abus #	Size	Shackle Diameter	Verticle Clearance	Horizontal Clearance	Price
AB65/20CKD	3/4"	5/32"	7/16"	3/8"	4.60
AB65/20CKA4	3/4"	5/32"	7/16"	3/8"	13.95
AB65/20CKA2	3/4"	5/32"	7/16"	3/8"	8.85
AB65/40C	1 1/2"	1/4"	7/8"	7/8"	11.75
AB65/40KA	1 1/2"	1/4"	7/8"	7/8"	12.65
AB65/50C	2"	5/16"	1 1/8"	1 3/16"	14.35
AB65/HB/40C	1 1/2"	1/4"	2 1/2"	7/8"	12.75
AB65/HB/50C	2"	5/16"	3 1/8"	1 3/16"	15.75

CT = Keyed alike pair

### RESETTABLE COMBINATION PADLOCK

An excellent choice for locking luggage, sports bags and other items when the convenience of a combination lock is desired.

- Zinc alloy lock body construction
  - 3 digit resettable combination for added security
  - Combination resettable without special tools
- Carded, 6/shelf pack



AB15620  
**375**

### DISKUS REKEYING KIT

AB24SK-1  
**108<sup>75</sup>**



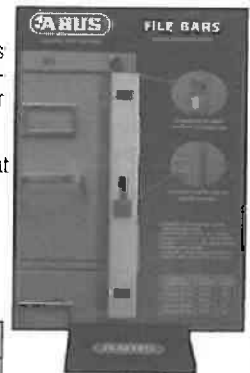
#### REKEYING INSTRUCTIONS

- Insert the key and open the shackle completely
- Insert the cylinder removal tool
- Withdraw the cylinder by removing the key
- Withdraw the key and take the cylinder out of the housing
- Rekey or replace the cylinder
- Reinsert the cylinder into the housing and insert the key
- Rotate the key approximately 110° to allow the cylinder tailpiece to fit in the locking mechanism
- Insert the housing and cylinder into the lock
- Withdraw the cylinder removal tool
- Check proper fit and locking function

### ABUS FILE BAR

The new ABUS File Bar has enclosed ends which give it a modern look. There is a conveniently located knob in the center of the file bar for easy and smooth operation.

- Inner & outer bar are finished in powder-coat finish.
- Constructed of heavy 16-gauge steel
- Built in spring-loaded hinge
- Mounting screws included



P/N	Length	Drawers	List
ABMLK-1	11"	1	36.42
ABMLK-2	21 1/2"	2	40.12
ABMLK-3	33 1/2"	3	42.59
ABMLK-4	45"	4	45.68
ABMLK-5	56"	5	50.62

### REKEYABLE SOLID STEEL - 34/55 SERIES

- Accepts American® Lock 6-pin cylinders (PTC12 & PTC14)
- Solid hardened steel body
- Hardened special alloy steel shackle
- Approved by housing authorities and correctional facilities
- Exceeds ASTM standards
- Unique tear-drop design allows for multiple uses
- Use the 24SK-1 Rekeying kit for the Abus cylinder
- The 34 Series can key into the 24, 28 and 41 series with the Abus cylinder
- 24/70 RK (Rekeyable Diskus) can key to the 34 Series

AB34/55RK  
1 1/8" Shackle  
**42<sup>35</sup>**

AB34/HB/55RK  
1 1/2" Shackle  
**44<sup>45</sup>**

2 1/8" Wide

