

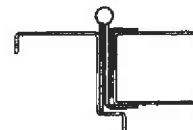
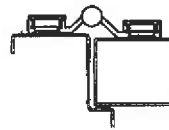
CONTINUOUS HINGES

Unlike conventional butt hinges which have traditionally caused door and frame failure, Markar Products' Continuous Hinges unite the door and frame into an integral unit, transmitting these severe shock loads directly into the frame. Latches continue to work, traffic flows, doors safely operate and costly maintenance is prevented.

Surface applied and don't require hinge cutout or reinforcements in doors or frames. All models are symmetrical, so there is no need to specify handing. Ideal for automatic operated entrances. Individually packed in cartons with screws and fasteners.

FULL SURFACE - 1/8" OFFSET

Code	Length (ft.)	Material	Finish	Price
MRFS101-7-AL	7	Aluminum	Aluminum	376.00
MRFS101-7-BRZ	7	Aluminum	Duranodic Bronze	479.00
MRFS101-8-AL	8	Aluminum	Aluminum	446.00
MRFS101-8-BRZ	8	Aluminum	Duranodic Bronze	552.00
MRFS201-7-P	7	Carbon Steel	Pwdr Coat Prime	320.00
MRFS301-7-SS	7	Stainless Steel	Stainless Steel	506.00



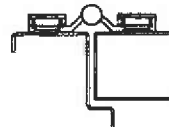
HINGE/GUARD

MRHG305-7-SS

7 Ft. Stainless Steel 487.00

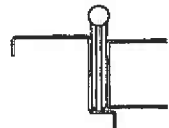
FULL SURFACE - FLUSH

Code	Length (ft.)	Material	Finish	Price
MRFS102-7-AL	7	Aluminum	Aluminum	376.00
MRFS102-7-BRZ	7	Aluminum	Duranodic Bronze	479.00
MRFS102-8-AL	8	Aluminum	Aluminum	446.00
MRFS102-8-BRZ	8	Aluminum	Duranodic Bronze	552.00
MRFS202-7-P	7	Carbon Steel	Pwdr Coat Prime	320.00
MRFS302-7-SS	7	Stainless Steel	Stainless Steel	506.00



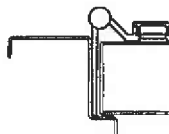
EDGE MOUNT

Code	Length (ft.)	Material	Finish	Price
MRFM100-7-AL	7	Aluminum	Aluminum	317.00
MRFM100-8-AL	8	Aluminum	Aluminum	367.00
MRFM100-8-BRZ	8	Aluminum	Duranodic Bronze	432.00
MRFM200-7-P	7	Carbon Steel	Pwdr Coat Prime	249.00
MRFM300-7-SS	7	Stainless Steel	Stainless Steel	373.00



HALF SURFACE

Code	Length (ft.)	Material	Finish	Price
MRHS103-7-AL	7	Aluminum	Aluminum	367.00
MRHS103-7-BRZ	7	Aluminum	Duranodic Bronze	440.00
MRHS203-7-P	7	Carbon Steel	Pwdr Coat Prime	288.00
MRHS303-7-SS	7	Stainless Steel	Stainless Steel	452.00



For surface mounting to wood

1/4-20 x 1 3/4" Sleeve Bolt
MRMP-23 Steel, zinc plate 2.28 ea

REINFORCING PIVOT

Provides a cost-effective reinforcement for butt-hinge systems and ensures longer door operating life. Adds support at the top of the door where most of the stress is concentrated. Easily installed by maintenance personnel, and comes with necessary fasteners. Adapts to any door and acceptable for use on fire doors.

Features--

- Made of 3/16" cadmium plated steel.
- Oilite bronze bearing
- Hardened steel pivot pin

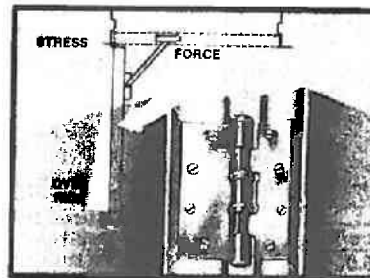
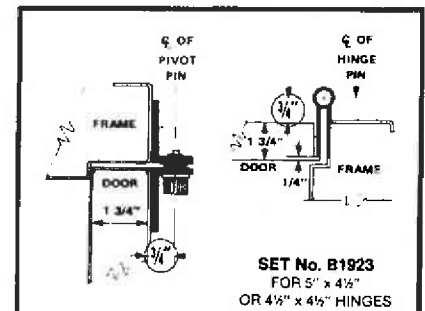


Figure 13
Illustration shows what eventually happens to conventional butt hinge under heavy use.



SET No. B1923
FOR 5' x 4 1/2"
OR 4 1/2' x 4 1/2" HINGES

Code	Handing	Price
MRB1923-RH	Left	61.00
MRB1923-LH	Right	61.00